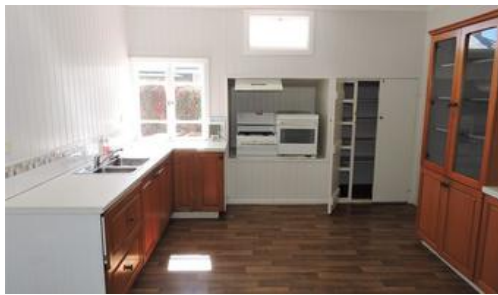




6 Deconlay St, Warwick



Spacious Timber Home with Shed Reduced to Sell!!!

This well positioned spacious timber home situated on an elevated 812m2 block close to hospital. Features 4 bedrooms plus sleepout, kitchen dining combined, lounge room with wood heater. Front deck and rear covered outdoor entertainment area with views to the mountain ranges. Downstairs laundry, 6mx6m colorbond garage and fully fenced. This property is well worth your inspection.

The above information provided has been furnished to us by the vendor/s. We have not verified whether or not that information is accurate and do not have any belief in one way or the other in its accuracy. We do not accept any responsibility to any person for its accuracy and do no more than pass it on. All interested parties should make and rely upon their own inquiries in order to determine whether or not this information is in fact accurate.

🛏️ 4 🏠 1 🚗 2

Price	\$209,000
Property Type	residential
Property ID	1393
Land Area	812 m2

Agent Details

Doug Rickert - 0437 618 360

Office Details

Warwick
126 Palmerin Street Warwick QLD
4370 Australia
07 46613444

